

# Town of Spring Green Comprehensive Plan

## Landuse and Landcover Legend






### Landcover

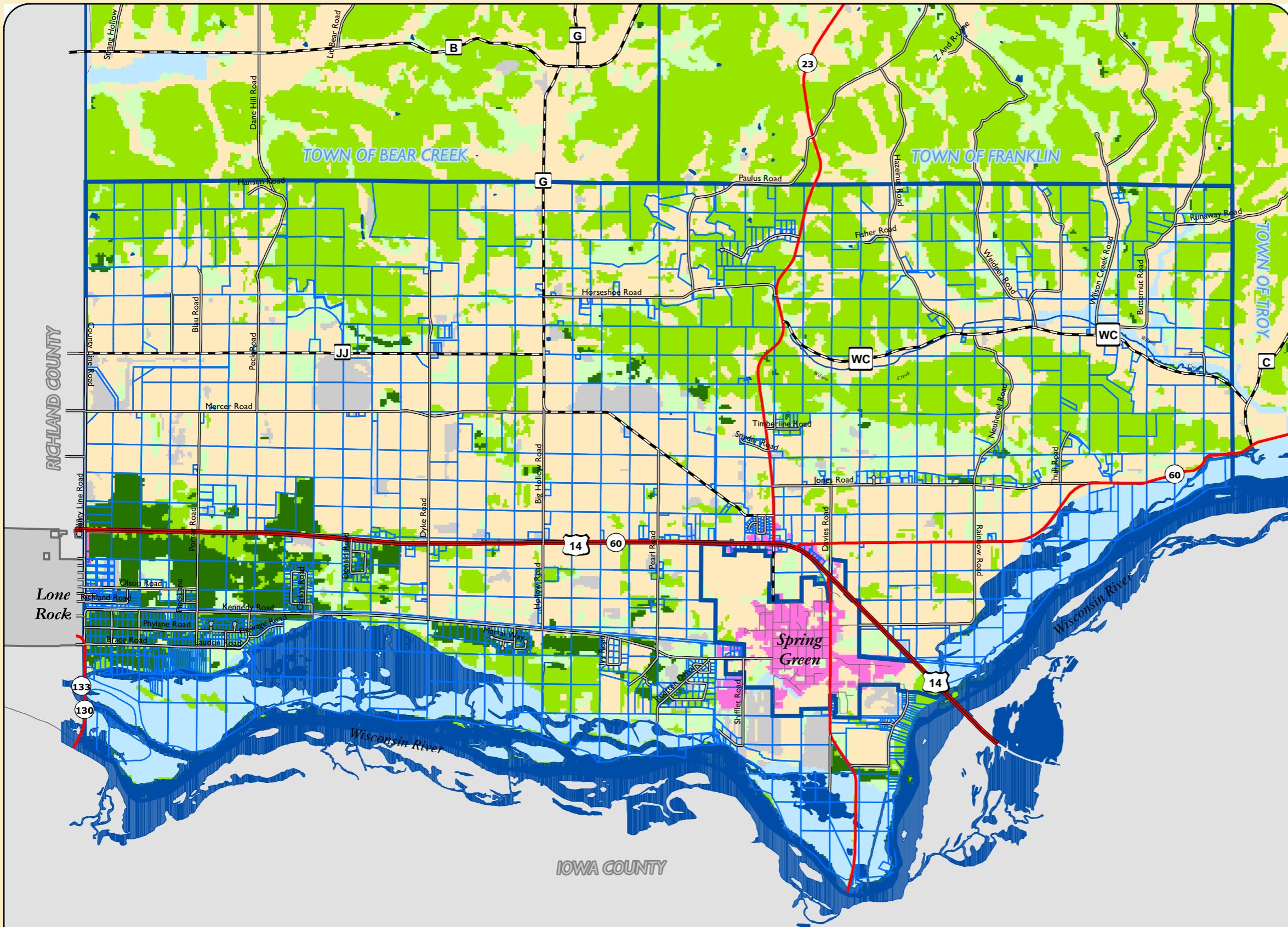
-  Urban / Developed
-  Agriculture
-  Grassland
-  Coniferous Forest
-  Deciduous Forest
-  Open Water
-  Wetlands
-  Barren

### General

-  Town Boundary
-  Parcel

### Transportation

-  United States Highway
-  State Highway
-  County Highway
-  Town Roads
-  Municipal Streets



Sources:  
Base information including parcels, waterways and roadways produced by the Sauk County Mapping Department.  
Land use and land cover interpretation courtesy of WISCLAND compiled by the Wisconsin DNR.

